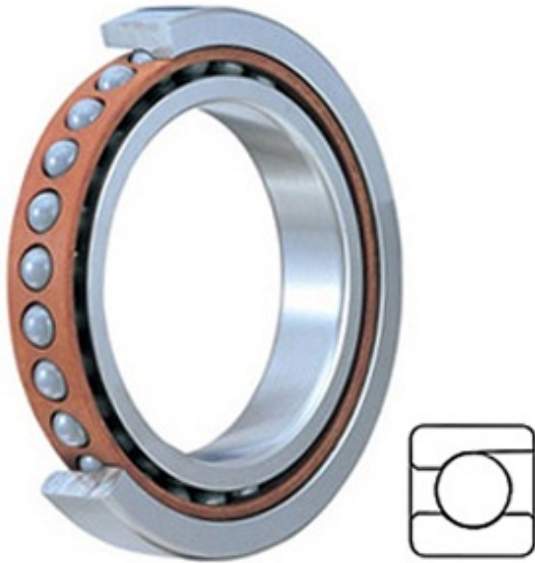




CONSOLIDATED BEARING trading LTD



3MM9328WI SUL Bearing 2D drawings and 3D CAD models

5.512 Inch | 140 Millimeter x 7.48 Inch | 190 Millimeter x 0.945 Inch | 24 Millimeter TIMKEN 3MM9328WI SUL Precision Ball Bearings

Bearing No. 3MM9328WI SUL

Category	Precision Ball Bearings
Inventory	0.0
Manufacturer Name	TIMKEN
Minimum Buy Quantity	N/A
Weight	1.746
EAN	0013992120465
Product Group	B04270
Enclosure	Open
Precision Class	ABEC 7 ISO P4
Material - Ball	Steel
Number of Bearings	1 (Single)
Contact Angle	25 Degree
Preload	Light
Raceway Style	1 Rib Outer Ring
Cage Material	Phenolic
Rolling Element	Ball Bearing
Mounting Arrangement	Universal
Flush Ground	Yes
Inch - Metric	Metric
Other Features	Single Row Angular Contact Super High Precision
Long Description	140MM Bore; 190MM Outside Diameter; 24MM Width; Open Enclosure; ABEC 7 ISO P4 Precision;



CONSOLIDATED BEARING trading LTD

	Steel Ball Material; 1 (Single) Bearings; 25 Degree Contact Angle; Phenolic Cage Material; 1 Rib Outer Ring R
Category	Precision Ball Bearings
UNSPSC	31171531
Harmonized Tariff Code	8482.10.50.28
Noun	Bearing
Keyword String	Angular Contact Ball
Manufacturer URL	http://www.timken.com
Manufacturer Item Number	3MM9328WI SUL
Weight / LBS	3.85
d	5.512 Inch 140 Millimeter
B	0.945 Inch 24 Millimeter
D	7.48 Inch 190 Millimeter